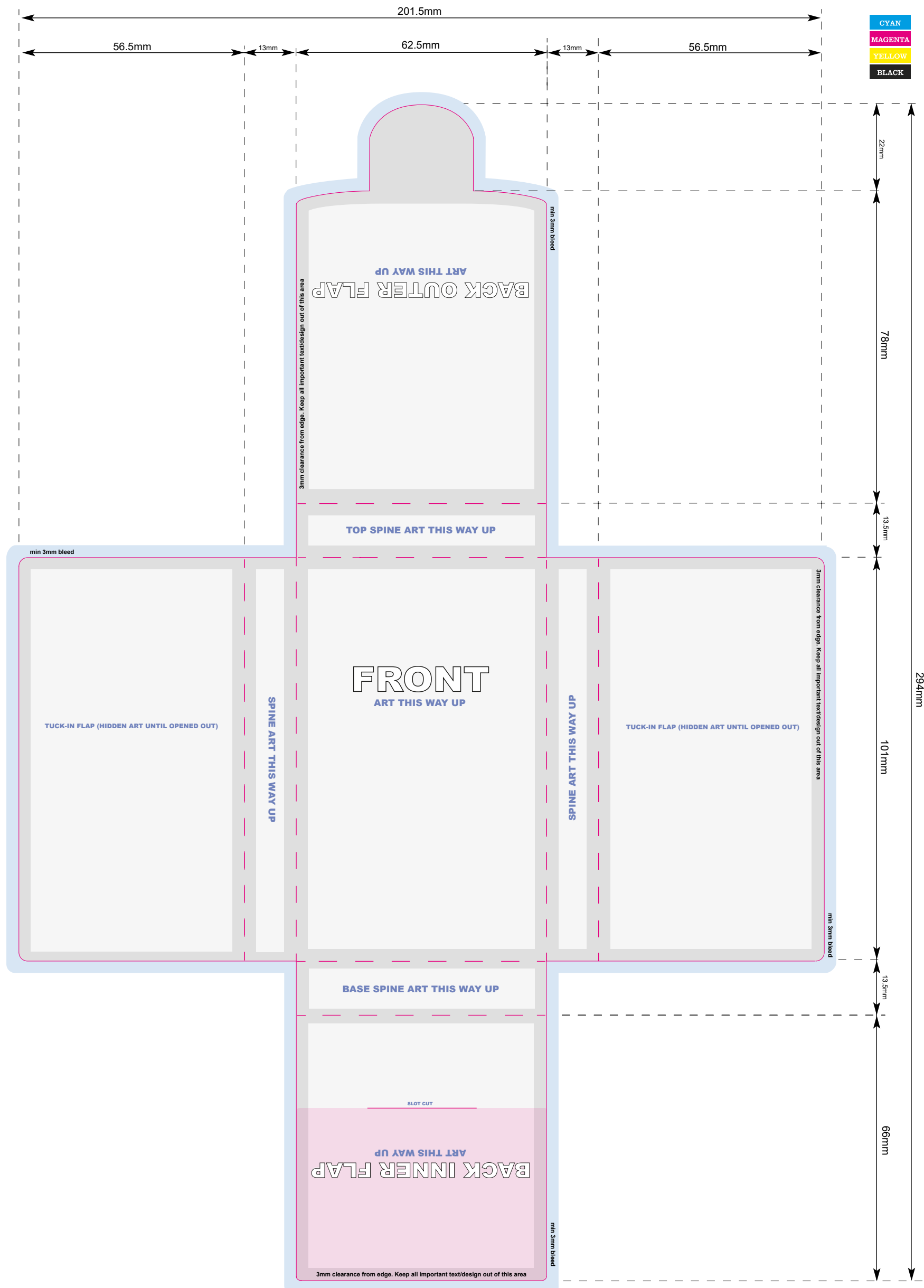


DESIGN STUDIO/PRINTING SPECIFICATION

Cassette Maltese Cross Case Full Box

IF WORKING DIRECTLY OVER THIS TEMPLATE PLEASE PLACE YOUR ARTWORK ON A SEPARATE LAYER
 If your software is vector based, you can simply lift/copy the template elements you require from this page to create a less-cluttered artwork or place over your existing artwork to check for any required adjustments

PRINTS FULL CMYK onto White



- Cut and Crease guide.
- Prime artwork area. Keep all important text/design WITHIN this area.
- 3mm clearance from outer edges and folds. Keep all important text/logo etc OUT of this area.
- Add a minimum 3mm bleed past outer edges for any background image or colour
- This area is covered by the 'Back Outer Flap' when box is made up - visible only when opened

SUPPLYING ARTWORK

Artwork can be supplied via SFTP, email (dependant on file size), as a download link for larger files or by disk or flash drive.

PREFERRED ARTWORK FORMAT

Hi-Resolution PDF with fonts embedded.

ACCEPTABLE FILE FORMATS

EPS (fonts outlined), Illustrator, Photoshop, Jpeg/Tiff, Indesign (include relevant fonts or embed in pdf / supply as outlines/paths).

PLEASE CHECK YOUR DESIGN/ARTWORK FILE

Artwork should be supplied with a minimum 3mm bleed if design is edge to edge.
 We will always provide a Proof set to requirements.