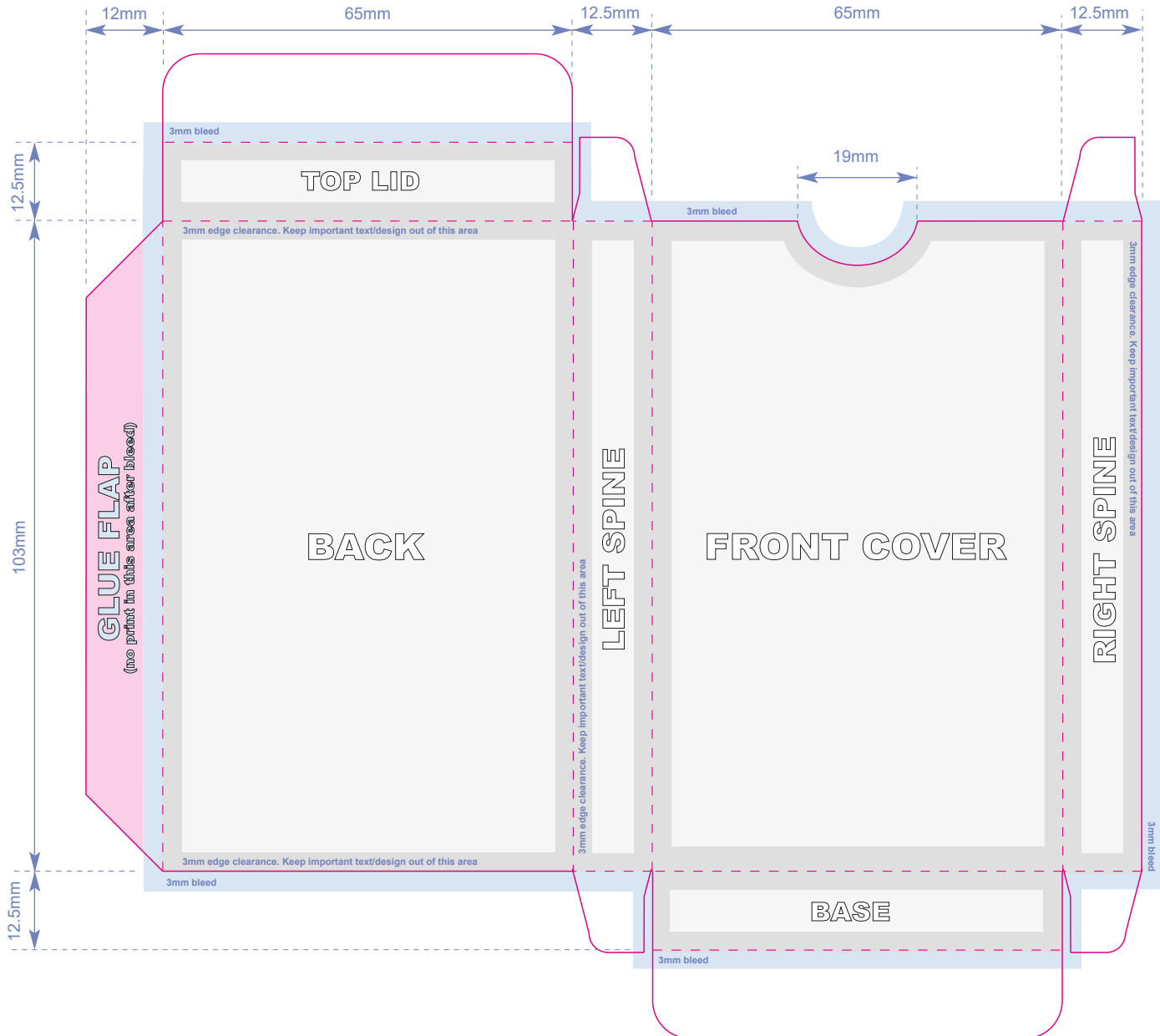


DESIGN STUDIO/PRINTING SPECIFICATION

Cassette Only Card Box with Thumb-Cut

IF WORKING DIRECTLY OVER THIS TEMPLATE PLEASE PLACE YOUR ARTWORK ON A SEPARATE LAYER
 If your software is vector based, you can simply lift/copy the template elements you require from this page to create a less-cluttered artwork or place over your existing artwork to check for any required adjustments



- Prime artwork area. Keep all important text/design WITHIN this area (3mm clearance from cuts & folds)
- 3mm clearance from cuts & folds. Keep all important text/logo etc OUT of this area
- IMPORTANT - add a minimum 3mm bleed past outer edge for any background image or colour
- NO PRINT AREA (AFTER THE 3mm BLEED) - this is the glue flap, no image will be visible.

SUPPLYING ARTWORK

Artwork can be supplied via SFTP, email (dependant on file size), as a download link for larger files or by disk or flash drive.

PREFERRED ARTWORK FORMAT

Hi-Resolution PDF with fonts embedded. Minimum picture/photo resolution of 300dpi

ACCEPTABLE FILE FORMATS

EPS (fonts outlined), Illustrator, Photoshop, Jpeg/Tiff, Indesign (include relevant fonts or embed in pdf / supply as outlines/paths).

PLEASE CHECK YOUR DESIGN/ARTWORK FILE

Artwork should be supplied with a minimum 3mm bleed if design is edge to edge.

We will always provide a Proof set to requirements.