

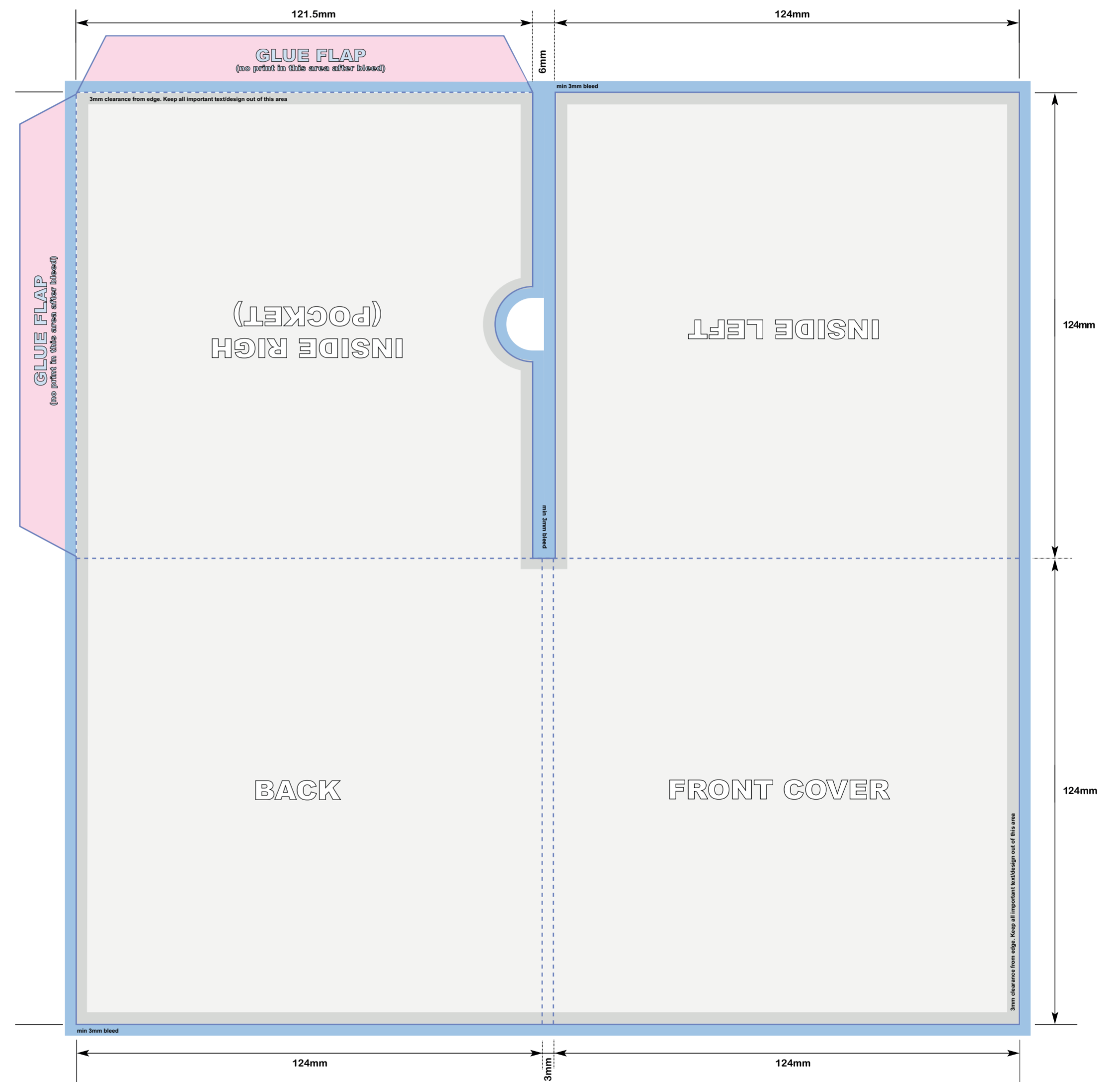
DESIGN STUDIO/PRINTING SPECIFICATION

CD Gatefold Card Wallet with 1 Thumb-Cut Pocket

IF WORKING DIRECTLY OVER THIS TEMPLATE PLEASE PLACE YOUR ARTWORK ON A SEPARATE LAYER
 If your software is vector based, you can simply lift/copy the template elements you require from this page to create a less-cluttered artwork or place over your existing artwork to check for any required adjustments



124mm x 124mm (wallet when made up)



- Prime artwork area. Keep all important text/design WITHIN this area (3mm clearance from cuts & folds)
- 3mm clearance from cuts & folds. Keep all important text/logo etc OUT of this area
- IMPORTANT - add a minimum 3mm bleed past outer edge for any background image or colour
- NO PRINT AREA AFTER THE 3mm BLEED - this is the glue tab, no image will be visible.

SUPPLYING ARTWORK

Artwork can be supplied via SFTP, email (dependant on file size), as a download link for larger files or by disk or flash drive.

PREFERRED ARTWORK FORMAT

Hi-Resolution PDF with fonts embedded. Minimum picture/photo resolution of 300dpi

ACCEPTABLE FILE FORMATS

EPS (fonts outlined), Illustrator, Photoshop, Jpeg/Tiff, Indesign (include relevant fonts or embed in pdf / supply as outlines/paths).

PLEASE CHECK YOUR DESIGN/ARTWORK FILE

Your artwork should have a minimum 3mm bleed on all outer/cut edges on all paper parts.
 We will always provide a Proof set to our spec via email.